



IconICS Overview

What is IconICS?

- Smart-Link is a virtual infrastructure bridge
- Designed for VHF and UHF radio systems
- Enables 'Groups' of local radio users to communicate across vast areas, even internationally, using the Internet
- Can work on BGAN, VSAT and other Broadband Internet connections
- The bridge can extend to Internet connected PC's

How does Smart-Link work?

An IconICS Smart-Link solution can be used to 'bridge' two sites allowing users at location 1 to be able to talk on the radio to users in location 2 as if they were in the same coverage area

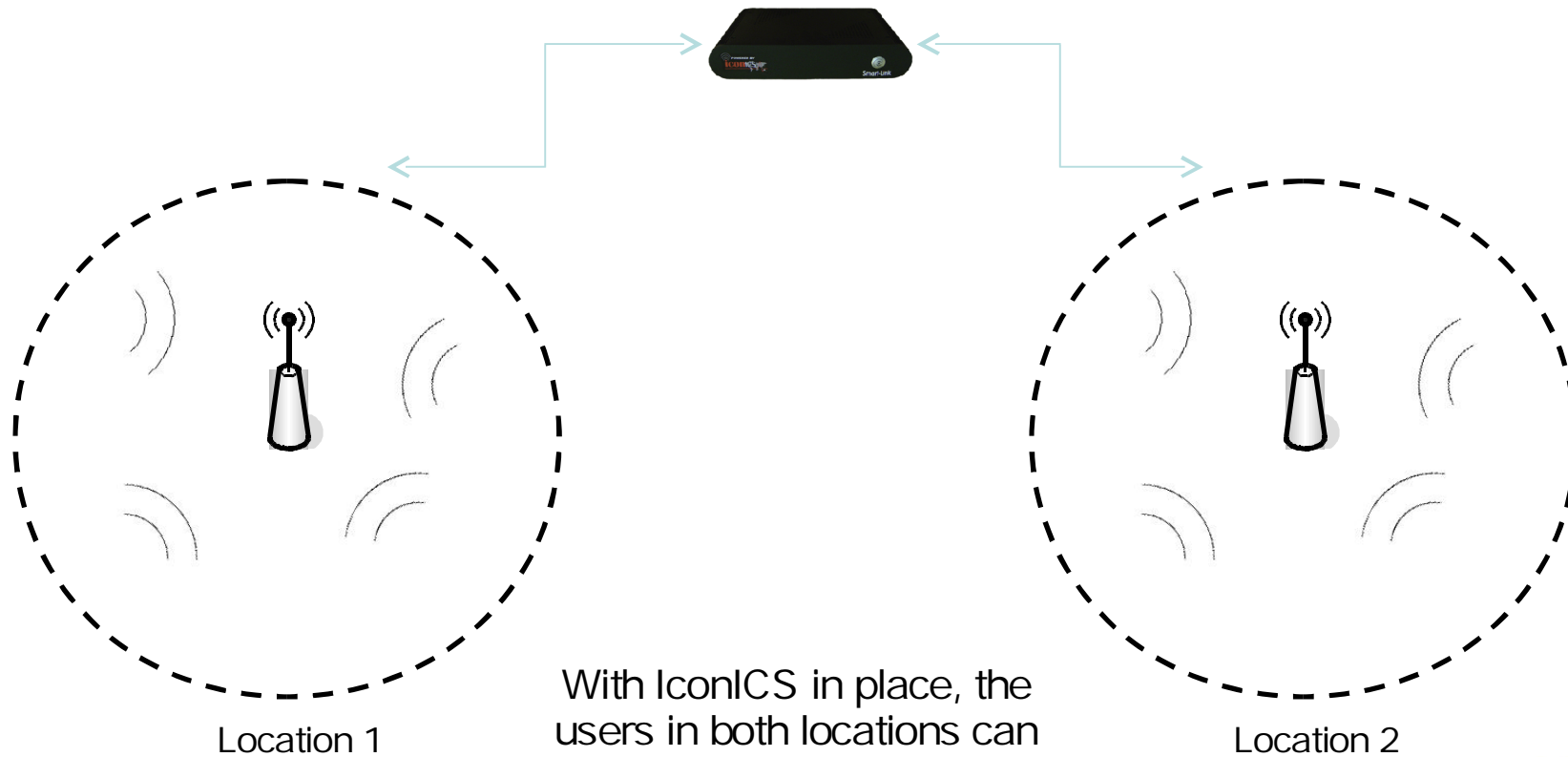
The IconICS units at both locations are connected to the Internet and instantly form a 'bridge' between the two sites via a central IconICS server

A new set of users are setup at location 2, many miles away from location 1

The following example displays portable radio users at location 1 are able to talk to each other in their local radio coverage

How does Smart-Link work?

In this example, portable radio users at location 1 are able to talk to each other in their local radio coverage



With IconICS in place, the users in both locations can now communicate effectively and efficiently

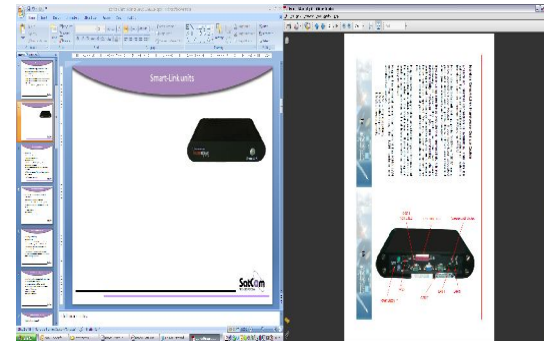
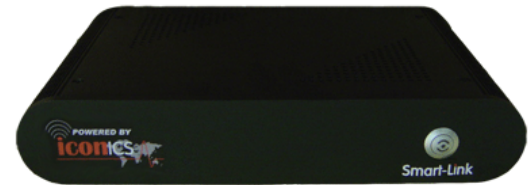
IconICS infrastructure components

- Smart-Link
 - Pre-configured client units that connect radio base stations to a server "Channel"
 - Can communicate with other IconICS clients within your "Channel"
- Smart-Client software
 - Client software that connects PC users to a server "Channel" for voice communication via microphone and speakers
 - Can communicate with other IconICS clients within your "Channel"
- Smart-Link servers
 - Provides Channel hosting for IconICS users to connect to
- Smart-Admin software
 - Used to control and administer users and channels within a server
- UHF / VHF Radios
- The Internet

Smart-Link

The Smart-Link unit is the core IconICS product providing the bridge between the local radio network and the Internet. A VHF or UHF radio base station plugs directly into the Smart-Link and bridges the voice across the Internet.

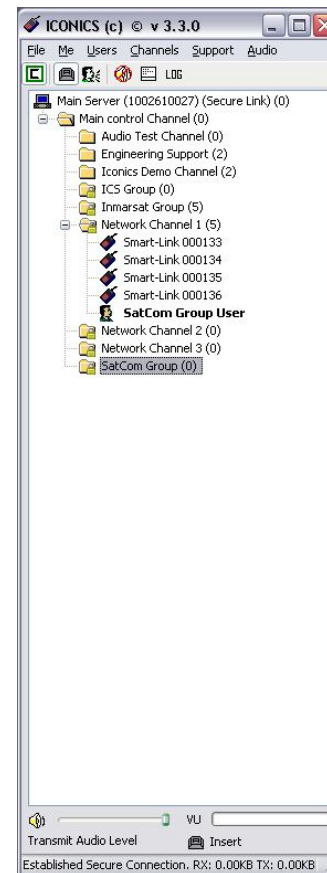
- Rugged and reliable chassis
- Multiple redundant hardware
- Two solid state HDD with mirror image for backup
- Three LAN ports for failover
- Connects to any DHCP-enabled Internet using Ethernet
- Requirements:
 - Stable Internet connection (16Kbps per active voice channels)
 - Stable 12V DC power supply
 - Supported radio base-station interface unit



Smart-Client software

The Smart-Client software is the PC based interface to the Iconics radio bridge, allowing PC users to interact with radio users from the comfort of an office.

- Installs onto a Windows PC
 - Supported by 95, 98, ME, 2000, XP, Vista and 2003
 - Requires a sound card, microphone, speakers, USB port and Internet connection
- Licensed using a USB Dongle on a per-PC basis
- Users can talk using push-to-talk keyboard commands
- Users can also text-chat to other users



Smart-Link Mini-Server

The Smart-Link Mini-Server is a host option of an IconICS system. The Mini-Server comes pre-loaded onto a Smart-Link chassis and provides a solution to smaller organisations requiring full control of their infrastructure.

- Serves Smart-Link and Smart-Client users with interconnection
- Fully manageable
- Maximum of 15 clients (Smart-Link or Smart-Client)
- Pre-installed onto a standard Smart-Link box
- Requires an Internet connection
 - Ethernet connectivity
 - 16Kbps per active channel
 - Public static IP address
 - Port forwarding required if running behind NAT



Smart-Link Full-Server

The Smart-Link Full-Server is a host option of an IconICS system. The Full-Server software can be installed on a traditional Windows server platform for ultimate flexibility and security.

- Serves Smart-Link and Smart-Client users with interconnection
- Unlimited clients (Based on bandwidth available)
- Installs onto a traditional Windows Server platform with minimum spec:
 - 2.4GHz Core 2 Duo CPU or above
 - 2GB RAM or above
 - Dual redundant hard disk drives
 - RJ-45 Ethernet card
- Requires an Internet connection
 - Ethernet connectivity
 - 16Kbps per active channel
 - Static Public IP Address
 - Port forwarding required if running behind NAT



Smart-Link Hosted-Server

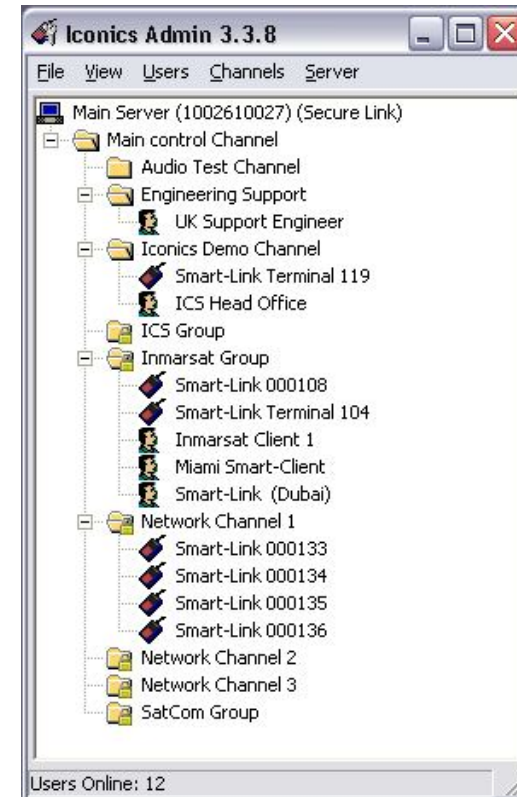
The Smart-Link Hosted-Server is a host option of an IconICS system. Using the Hosted-Server option provides the benefits of IconICS without the admin and overheads of hosting your own server system.

- Serves Smart-Link and Smart-Client users with interconnection
- Dual-redundant servers hosted in 2 separate locations for maximum reliability
- Unlimited clients
- Minimum administration and overheads
- Connection information provided by SatCom
- Support provided directly by SatCom

Smart-Link admin software

The Smart-Link admin software allows privileged users or system administrators to be able to administer the channels used by Smart-Link clients in any of the deployment models.

- Administration access for channels
- Ability to “Move” users from one channel to another using drag-and-drop
- “Group-Call” function allowing all users to communicate in one channel at the push of one button
 - Ideal for emergency situations
 - Users placed back in originating channels when done



IconICS infrastructure options

The IconICS components fit into the following infrastructure options:

- **Basic**
 - Hosted-Server
 - Minimum administration
- **Admin**
 - Hosted-Server
 - Channel administration options
- **Mini**
 - Mini-Server
 - Full control of your system for up to 15 clients
- **Full**
 - Full-Server
 - Full control of your system with unlimited clients

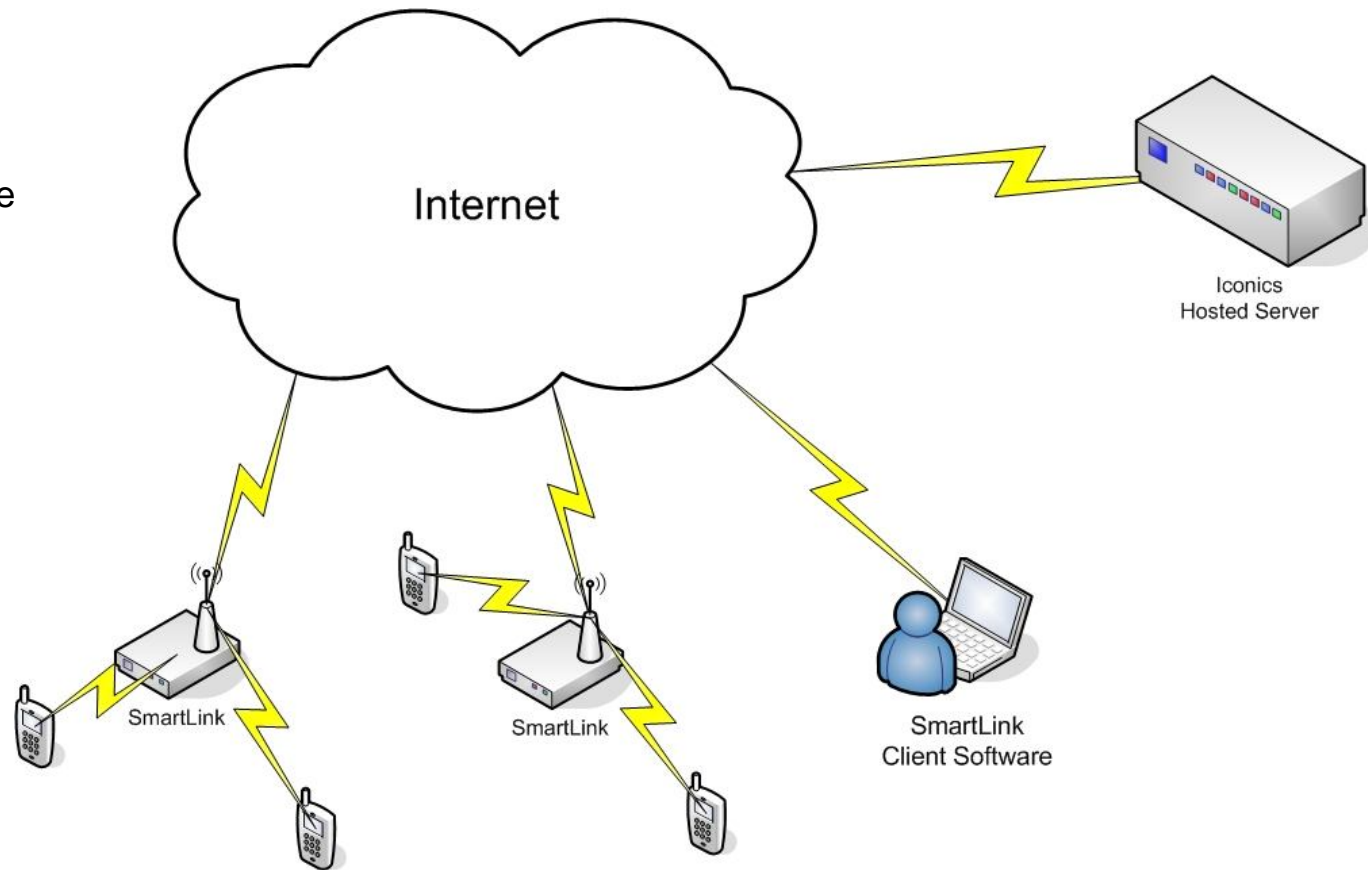
The 'IconICS Basic' package comprises of:

- At least one Smart-Link unit plus at least one of the following two:
 - Smart-Link unit
 - Smart-client software package
- Hosted server service package from IconICS
- Suitable Internet connections for each client

IconICS Basic

Key components

1. Smart-Link
2. Radio users
3. Smart-Client software
4. Hosted-Server
5. The Internet



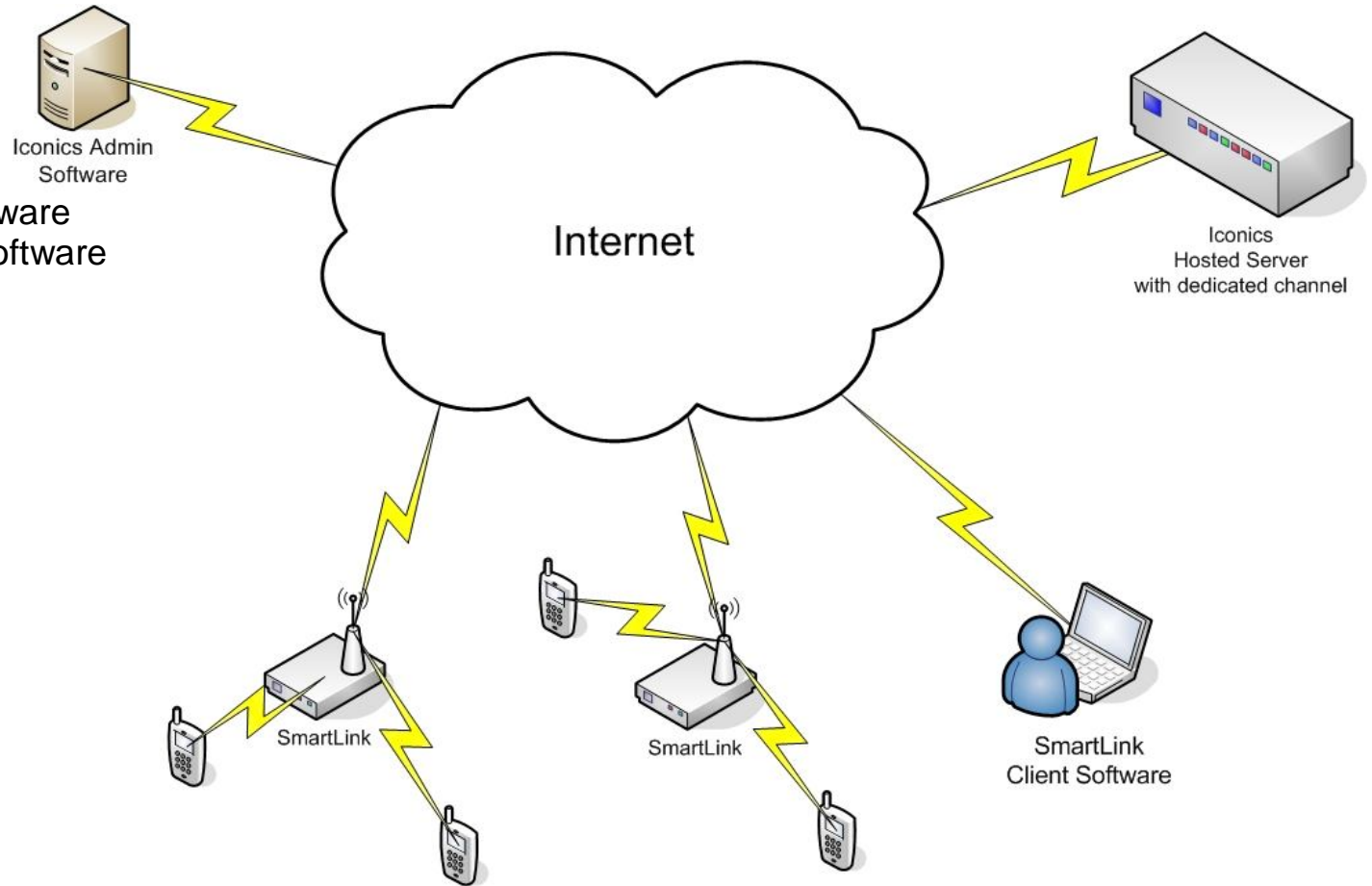
The 'IconICS Admin' package comprises of:

- At least one Smart-Link unit plus at least one of the following two:
 - Smart-Link unit
 - Smart-client software package
- One Windows PC with Smart-Link Admin software
- Suitable Internet connections for each client and the admin PC
- Hosted server service package from IconICS

IconICS IconICS Admin

Key components

1. Smart-Link
2. Radio users
3. Smart-Client software
4. IconICS admin software
5. Hosted-Server
6. The Internet



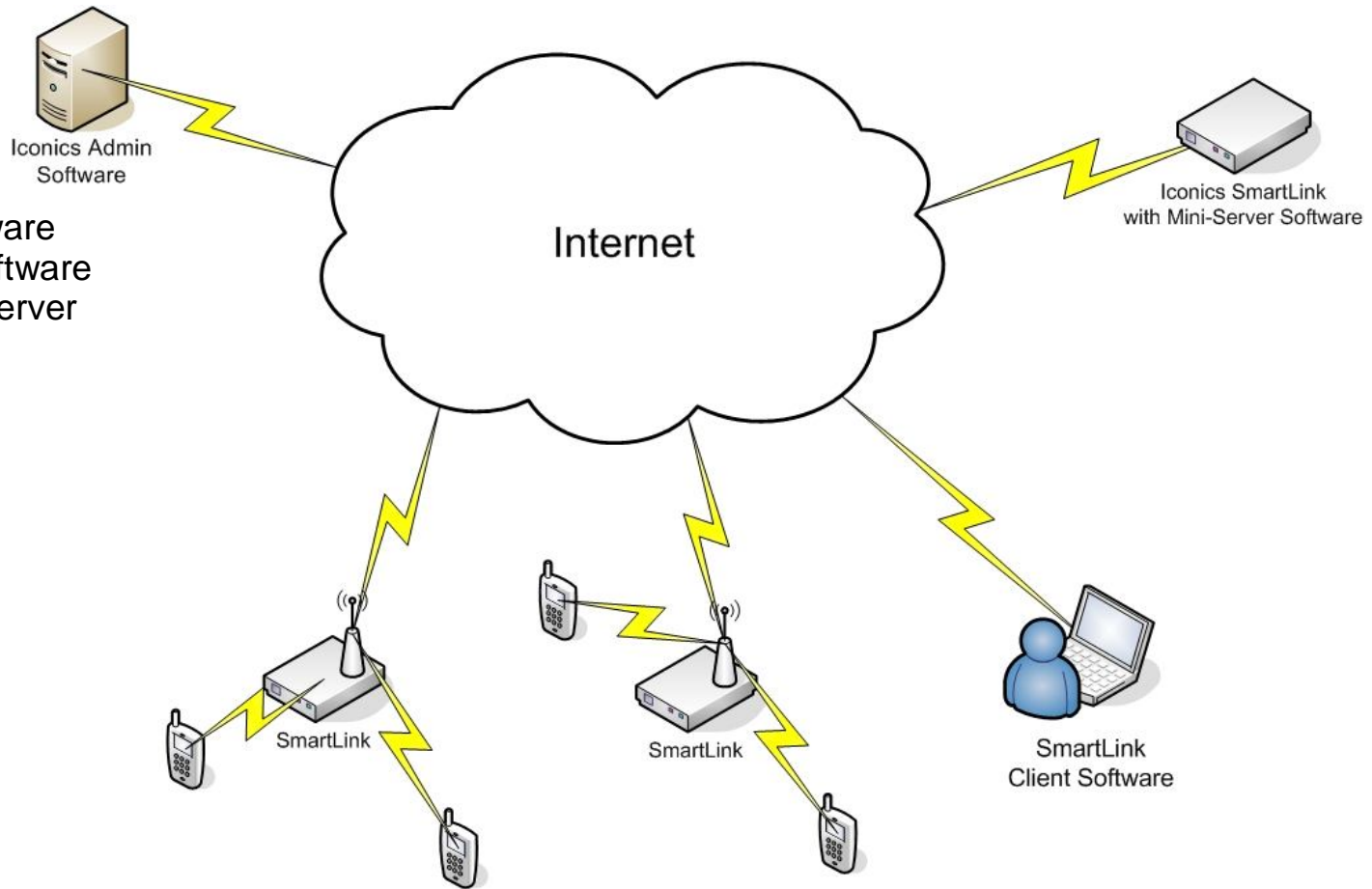
The 'IconICS Mini-Server' package comprises of:

- At least one Smart-Link Mini-Server unit plus at least one of the following two:
 - Smart-Link unit
 - Smart-client software package
- One Windows PC with Smart-Link Admin software
- Suitable Internet connections for each client and the admin PC
- A suitable Internet connection for the Smart-Link Mini-Server

IconICS Mini-Server

Key components

1. Smart-Link
2. Radio users
3. Smart-Client software
4. IconICS admin software
5. Smart-Link Mini-Server
6. The Internet



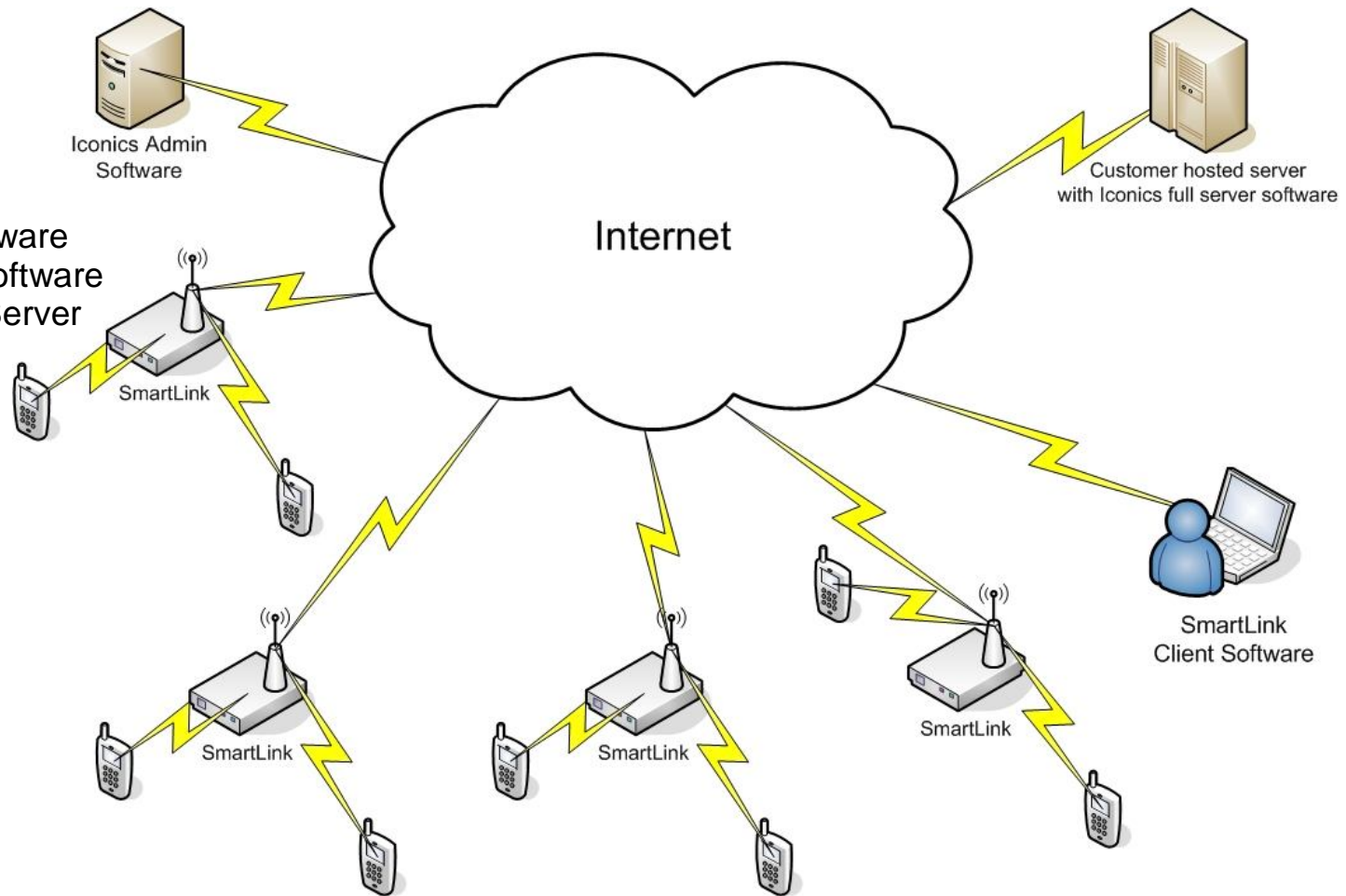
The 'IconICS Full-Server' package comprises of:

- IconICS Smart-Server Software, a Smart-Link unit, plus at least one of the following two:
 - Smart-Link unit
 - Smart-client software package
- One Windows PC with Smart-Link Admin software
- Windows based Server Platform (supplied by customer)
- Suitable Internet connections for each client and the admin PC
- A suitable Internet connection for the Server

IconICS Full-Server

Key components

1. Smart-Link
2. Radio users
3. Smart-Client software
4. IconICS admin software
5. Smart-Link Full-Server
6. The Internet



Any questions?

